



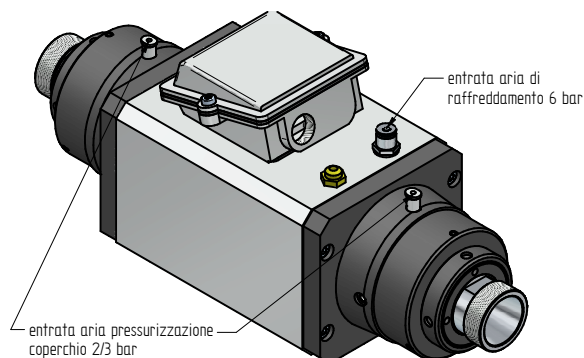
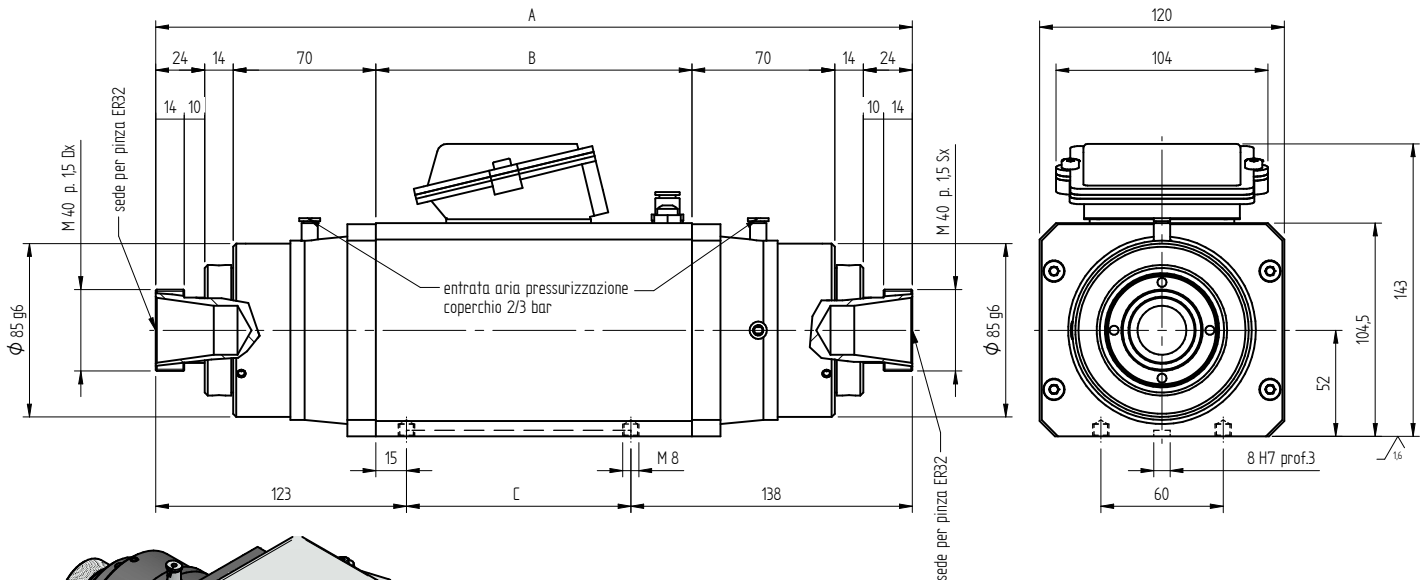
High speed precision spindles

SCHEDA TECNICA

TMPE4 BIALBERO ER32



MODELLO	TENSIONE [Volt]	FREQUENZA [Hz]	GIRI	POT. RESA [Kw]	ASSORB. [Amp]	Cos j	PESO [Kg]
TMPE4 10/2 aria compressa	220/380	50	3000	0,65	3,30/1,90	0,72	15,5
TMPE4 10/2 liquido	220/380	50	3000	0,70	3,40/2,00	0,72	15,5
TMPE4 10/2 aria compressa	220/380	100	6000	1,10	4,90/2,80	0,77	15,5
TMPE4 10/2 liquido	220/380	100	6000	1,30	5,70/3,30	0,77	15,5
TMPE4 10/2 aria compressa	220/380	200	12000	2,20	9,70/5,60	0,77	15,5
TMPE4 10/2 liquido	220/380	200	12000	2,50	11,00/6,40	0,77	15,5
TMPE4 10/2 aria compressa	220/380	300	18000	3,30	13,70/7,90	0,80	15,5
TMPE4 10/2 liquido	220/380	300	18000	3,60	14,7/8,50	0,80	15,5
TMPE4 14/2 aria compressa	220/380	50	3000	1,10	5,50/3,15	0,72	17
TMPE4 14/2 liquido	220/380	50	3000	1,30	6,4/3,70	0,72	17
TMPE4 14/2 aria compressa	220/380	100	6000	2,20	9,50/5,50	0,77	17
TMPE4 14/2 liquido	220/380	100	6000	2,50	10,50/6,10	0,77	17
TMPE4 14/2 aria compressa	220/380	200	12000	3,70	15,00/8,70	0,78	17
TMPE4 14/2 liquido	220/380	200	12000	4,00	15,70/9,10	0,78	17
TMPE4 14/2 aria compressa	220/380	300	18000	5,60	20,00/11,50	0,85	17
TMPE4 14/2 liquido	220/380	300	18000	6,00	21,10/12/20	0,85	17



TIPO	A	B	C
TM PE4 10/2	371	155	110
TM PE4 14/2	411	195	150

