



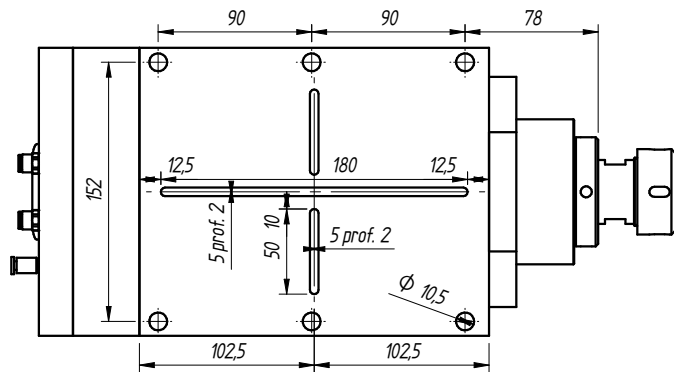
High speed precision spindles

SCHEDA TECNICA

AF 110 ER 32



MODELLO	TENSIONE [Volt]	FREQUENZA [Hz]	GIRI	POT. RESA [Kw]	ASSORB. [Amp]	Cos j	PESO [Kg]
AF110 14/2 ER32 aria compressa	380	200/300	12000/18000	7,0	14,5	0,85	28
14/2 ER32 liquido	380	200/300	12000/18000	7,5	16,8	0,85	28
AF110 14/2 ER32 aria compressa	380	300/400	18000/24000	7,0	14,5	0,82	28
14/2 ER32 liquido	380	300/400	18000/24000	8,5	19,4	0,82	28
AF110 14/2 ER40 aria compressa	380	100/200	6000/12000	4,0	8,8	0,82	28
14/2 ER40 liquido	380	100/200	6000/12000	5,0	10,0	0,82	28
AF110 14/2 ER40 aria compressa	380	200/300	12000/18000	7,0	14,5	0,85	28
14/2 ER40 liquido	380	200/300	12000/18000	7,5	16,8	0,85	28



Pressurizzazione 4 BAR
Entrata liquido / aria tubo ϕ 6
Uscita liquido / aria tubo ϕ 6

Pressurization 4 BAR
Liquid / air cooling inlet hole ϕ 6
Liquid / air cooling output hole ϕ 6

Pressacavo per alimentazione motore
Gland power feed

